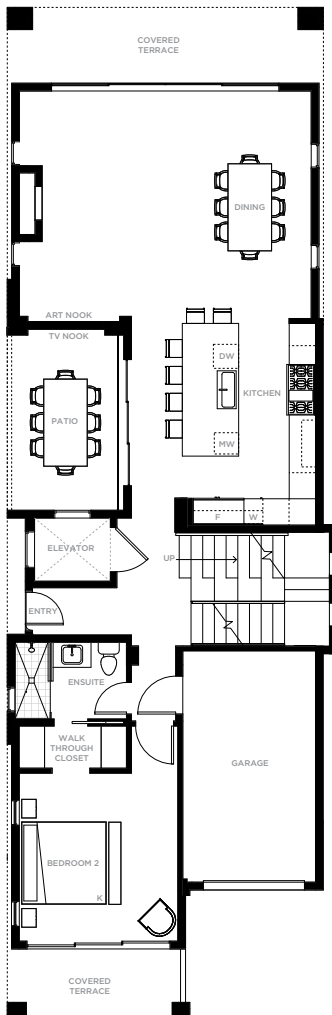




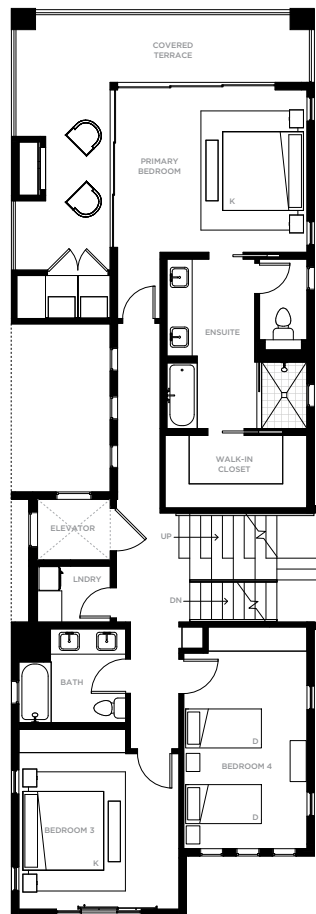
WHITECAP
NORTH PADRE ISLAND

THE SOLA

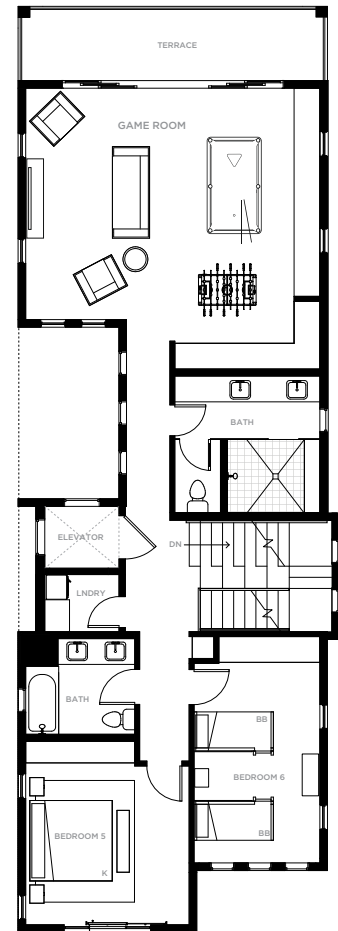
3 STORY | 6 BEDROOM | 5 BATH
APPROX. 4,135 SF



FIRST FLOOR



SECOND FLOOR



THIRD FLOOR

IN AN EFFORT TO CONTINUOUSLY IMPROVE OUR PRODUCTS, THE DEVELOPER RESERVES THE RIGHT TO CHANGE OR MODIFY PLANS, MATERIALS, AND SPECIFICATIONS WITHOUT NOTICE. ALL INFORMATION AND SERVICES ARE SUBJECT TO CHANGE. SQUARE FOOTAGES ARE APPROXIMATE AND ACTUAL SQUARE FOOTAGES MAY VARY. ALL PHOTOGRAPHS, RENDERINGS AND OTHER DEPICTIONS ARE FOR THE SOLE PURPOSE OF ILLUSTRATION AND ARE SUBJECT TO CHANGE. IMAGERY IS REPRESENTATIONAL AND DOES NOT DEPICT SPECIFIC BUILDINGS, VIEWS OR FUTURE ARCHITECTURE, COMMUNITY, AMENITIES OR OTHER DETAILS. THIS IS NOT AN OFFERING FOR SALE IN ANY JURISDICTION WHERE THE PROJECT IS NOT REGISTERED. MARKETING & SALES: STRATEGYST, LLC ©2025 DIAMOND BEACH HOLDINGS, LLC E.&O.E. V31053-250307

